



# ISE 211 - Industrial Information Systems Databases and Analysis

Lecture 11 - Chapter 6 - 4

Design Of

## User / Machine Interface



Izmir University of Economics

Halil POSACI

2011, Izmir



# Agenda

- Macros
- Unbounded Components
- Reports
  - Layout & Interaction with Tables
  - Derived Attributes
- Forms and Reports in Applications
- Security



# Macros

## Functionality for Certain Tasks

- VBA(VB for Applications or Macros)
  - Coders like VBA
  - Office super users like Macros
- In Word & Excel there is Macro recorder
  - All actions are recorded as VBA code

It is different in access

- No recording ability
- Easy to write

VBA in Access is

- Faster
- Powerful for control and interaction with other applications

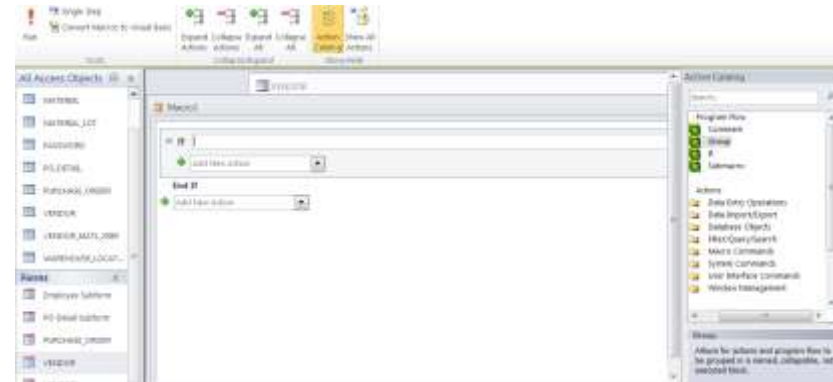
```
Sub InsertNames ()  
,  
' InsertNames Macro  
,  
  
    Selection.TypeText Text:="Rob Cooper"  
    Selection.TypeParagraph  
    Selection.TypeText Text:="Senior Test  
Lead"  
    Selection.TypeParagraph  
    Selection.TypeText Text:="Microsoft  
Corporation"  
End Sub
```



# Macros

## Types of Macros

- Macro Objects
  - Standalone
  - Listed in navigation pane
  - Associated with a control
- Embedded macros
  - Stored in event property
  - Can be copied together with a control
- Data macro (New in 2010 – Like triggers)





# Macros

## Sub Macros

- [Download Macro Samples](#)
- Called as MacroName.SubMacroName
- Some examples of use
  - Opening Forms and Reports
  - Running Group Of Queries
  - Exporting Data to Excel

```
Submacro: Sub1
    MsgBox
        Message: This is submacro Sub1
End Submacro
Submacro: Sub2
    MsgBox
        Message: This is submacro Sub2
End Submacro
```

```
MsgBox
    Message: This macro defines Submacros
    only and is not intended for direct use.
StopMacro
Submacro: Sub1
    MsgBox
        Message: This is submacro Sub1
End Submacro
Submacro: Sub2
    MsgBox
        Message: This is submacro Sub2
End Submacro
```



# Implementing Reports

## Lab Work

Use of Reports Wizard in Materials Manager



# Implementing Switch Board

## Lab Work

Use a blank form with buttons to switch

Then use macros or VBA to switch between forms



# Implementing Security

## Lab Work

Open in Exclusive mode

Select encryption

!! Form based security is not available in access

Grouping users is possible

for read-only or read-write ability





# Project Discussions



# Questions

Next Week – Project Discussions

532 2877127

[hposaci@quiztechnology.com](mailto:hposaci@quiztechnology.com)