

IE 450 – Project Management



Week 1

Introduction

About Me - About The Course

What is Project? – Project Initiation



Halil POSACI

2017, İzmir



- Graduated from METU -1978
- MBA – Planning & Org. DEU -1995
- IT Manager Tarihbank -2000
- IT Coordinator – Smart Ticketing System 2000-2010
- Part time instructor in IUE 2003-2014
- IT Consultancy training – Meta-USA, Germany
- Solar system design training – SMA Germany 2010
- Part time instructor in YU 2017 - ?

Agenda today

- About the Course
- What is Project?
- Why Projects – Ideal systems
- Project Management Success - PMI
- Project Management Life Cycle
- Project Initiation
- Project Manager - is it you?
 - Responsibilities of PM
 - Aim and levels of planning
 - Tools to be used & course resources

-
- Teams – Loading software – Discussions
 - MS-Project assignment (No grade yet)
 - PMBOK



About the Course

- Syllabus:
- <http://quiztechnology.com/IE450SyllabusHP.pdf>



What is Project



From new Bridge on Bosphorus
to your new kitchen

Design of a new design
of “hydrogen to electricity
power production unit”



From Uber competitor Europewide
to your company web site



From new production line
to your U shaped Lean workplace



What is Project

Types

- New projects
 - Tesla 1
 - Tesla 1 production line
 - New home
 - Brand new software
 - New airport or new terminal
- Improvement projects
 - Renovation of a big project
 - BPR
 - Work Place Improvement
 - Software version +1
 - New model on Auris platform

Properties

1. Project is a one time job
2. If not look at step 1.
3. PM is developed only for one cycle if there is more.



What is Project

1. Project is a one time job
2. It has a starting point and the end point (Starting and ending mile stones)
3. It produces a unique result (Change the world – Tiny or huge)
4. Lots of interrelated (effecting each other) jobs.
 - Each may need time and money (meaning cost).

Not a repetitive job

Aim of it is to approach **Ideal World For Human**

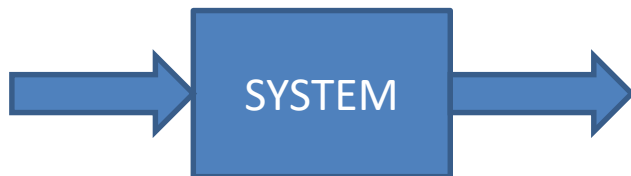


Why Projects

IDEAL System - Can It Be Real

AVAILABLE SYSTEM

- Some Cost
- Some Production
- Some Service



IDEAL SYSTEM

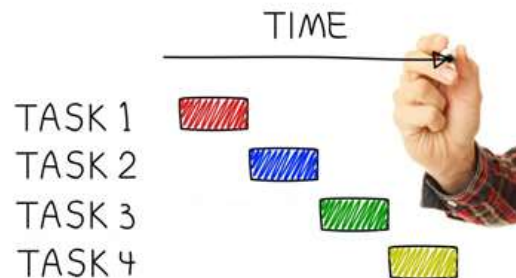
- Zero Cost
- Infinite Production
- Infinite Satisfaction

We need BRIGHT IDEAS

AND

MONEY to invest

Approach to Ideal By means of Projects

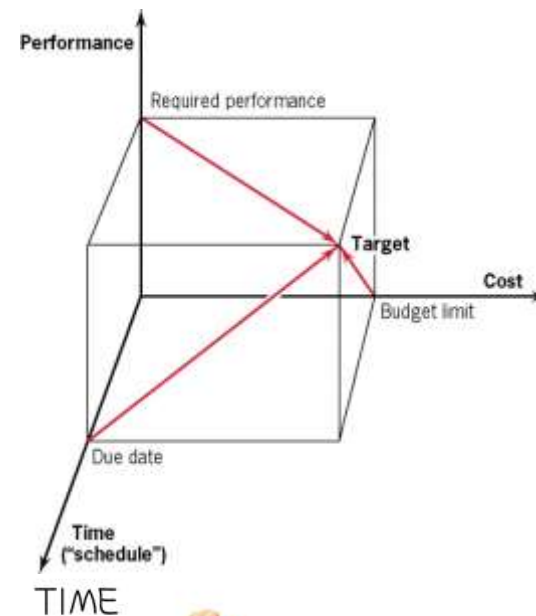


Proceeding with
whistleblowers
Every aspect to
tasks
Visual about the
incidents/problems.



Project Management Success

TARGET – A better world



- TASK 1
- TASK 2
- TASK 3
- TASK 4



Unsuccessful Project Management

- Company Loses
- Country loses
- Project Manager Fired
- Team members do not promoted and may be fired

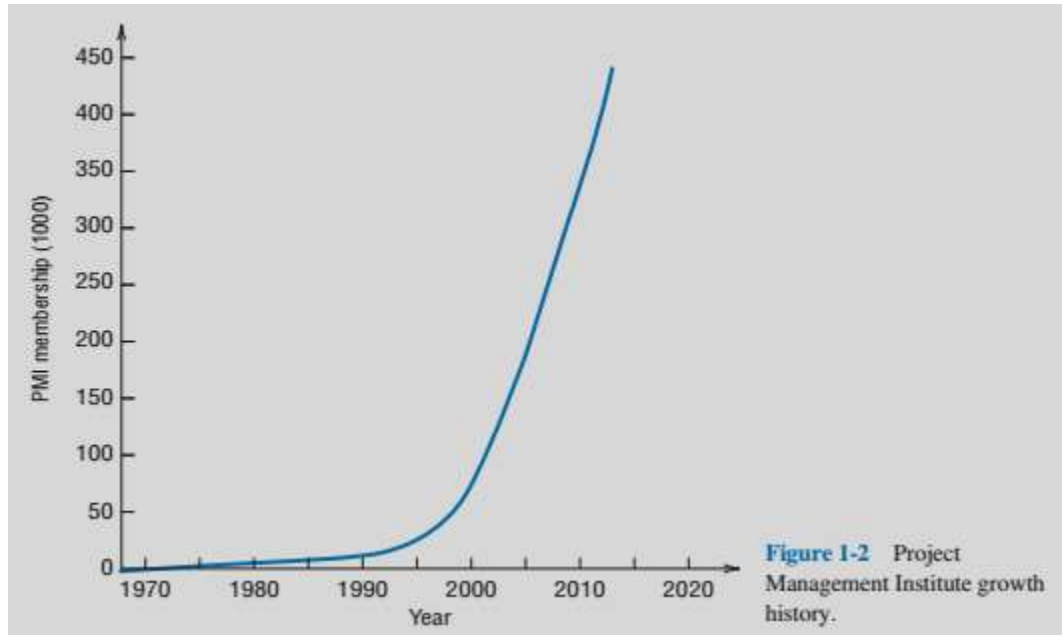


May be you



Project Management & PMI

Why does it gain popularity?

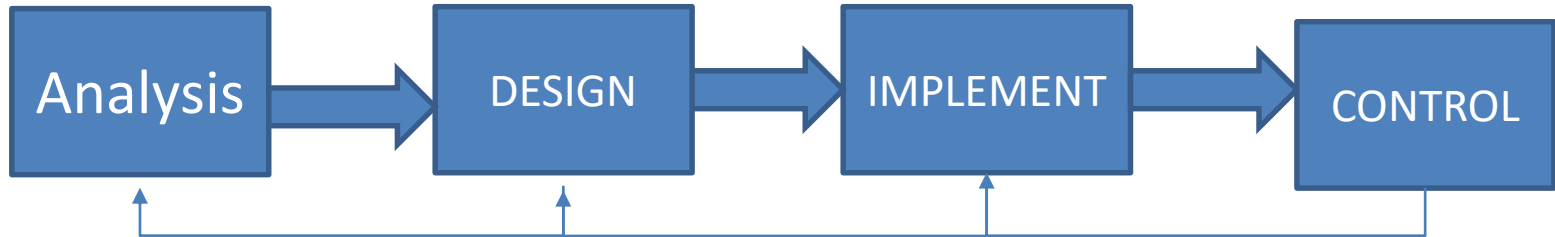


www.pmi.org

www.pmi.org.tr



Project Management Life Cycle

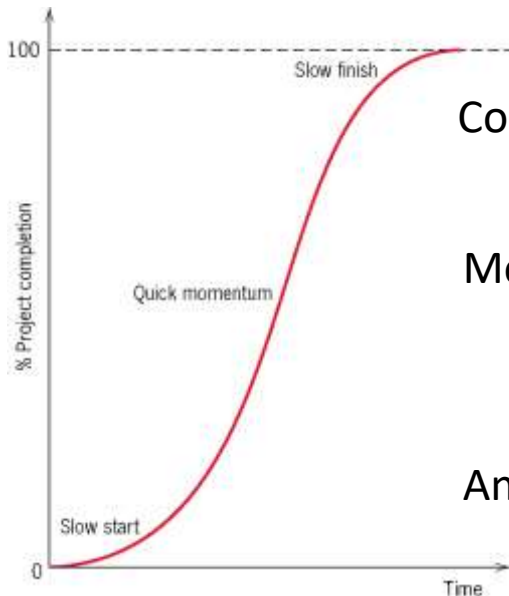


Feedback may cause

Feedback
Low Cost

Feedback
High Cost

Feedback
Extremely High Cost



Complete as controlling full details

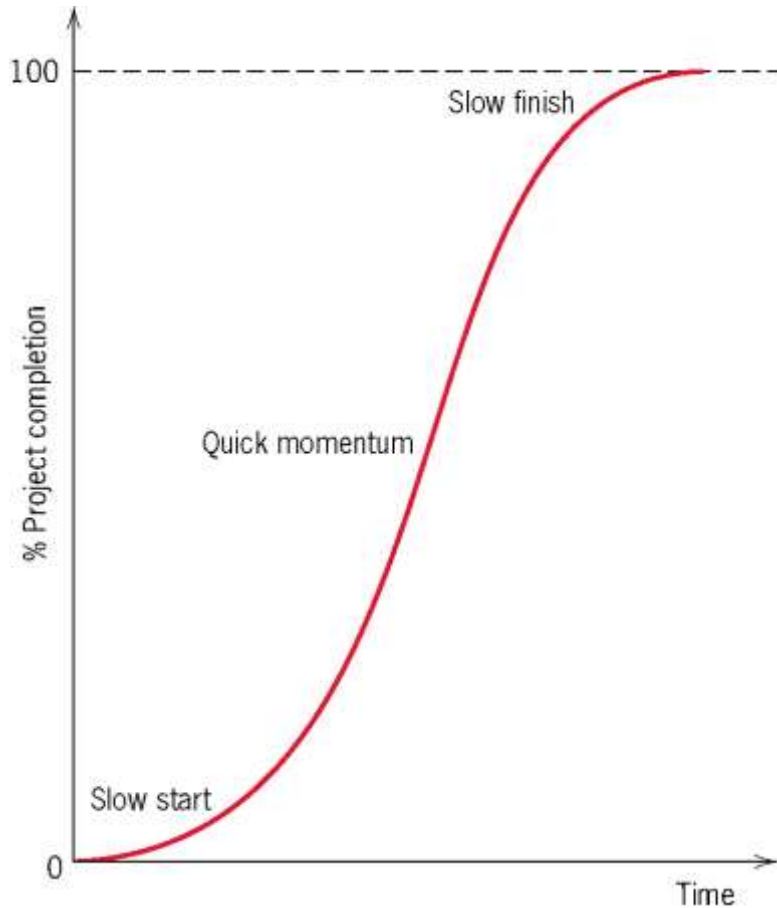
Move confidentially

Analyze and design well

Changes within
First Phases are
Less costly

Project Management Life Cycle

Time base



Complete as controlling full details

Move confidentially

Analyze and design well

Project Initiation

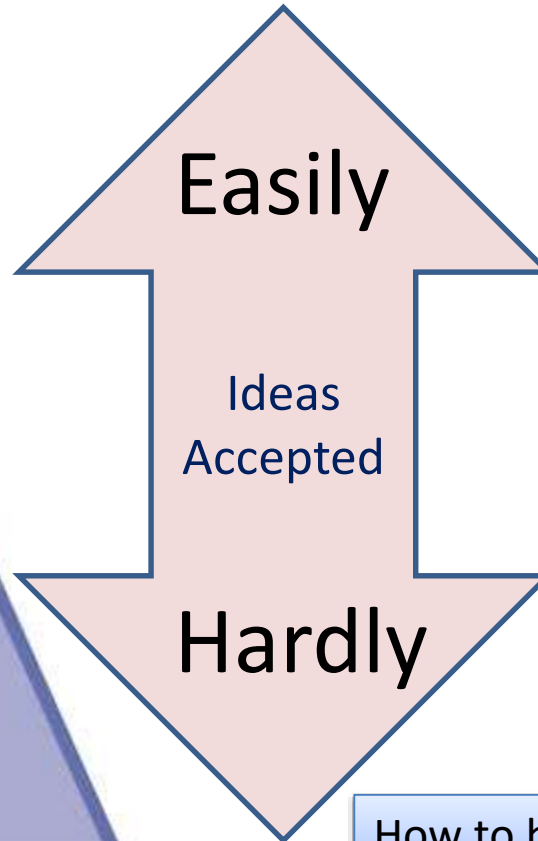
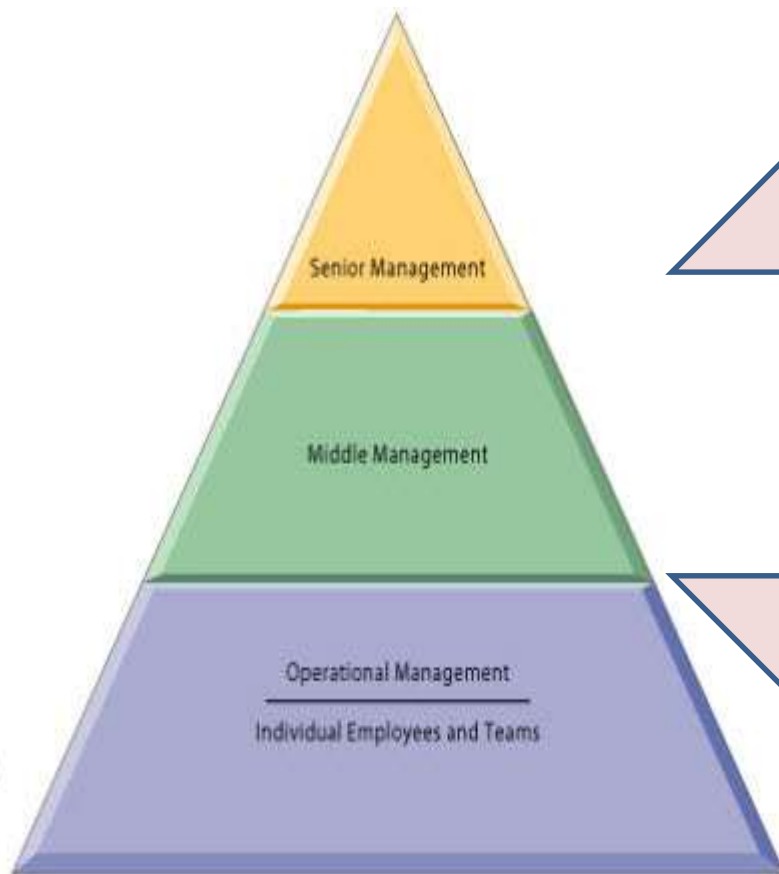
(Start with dreams about Ideal)

- Social necessities or pressures (Livable earth)
- Competitive necessities
 - Being best or at least the first seven in the world
- Financial necessities
 - Tax or investment incentives
 - Cheap credit incentives
 - Treasury force to Balance sheet



Project Initiation (And ideals are different)

Competition of ideas – Stronger gains



Acceptation
of your teams
ideas makes
you and the
team move up

How to be strong using knowledge

Project Initiation

How to make the Boss(es) believe

- Good analysis of present situation
- Being analytical with numbers
 - Show opportunities first threats later
- Presenting the future idea
 - In less than 20 minutes (best is one second)
 - In half page summary with full analysis document
- Use of tools like
 - Spreadsheet – presentation – etc.

We will dive in week 3

Project Initiation Feasibility Report

- Technical feasibility
- Social feasibility
- Financial feasibility

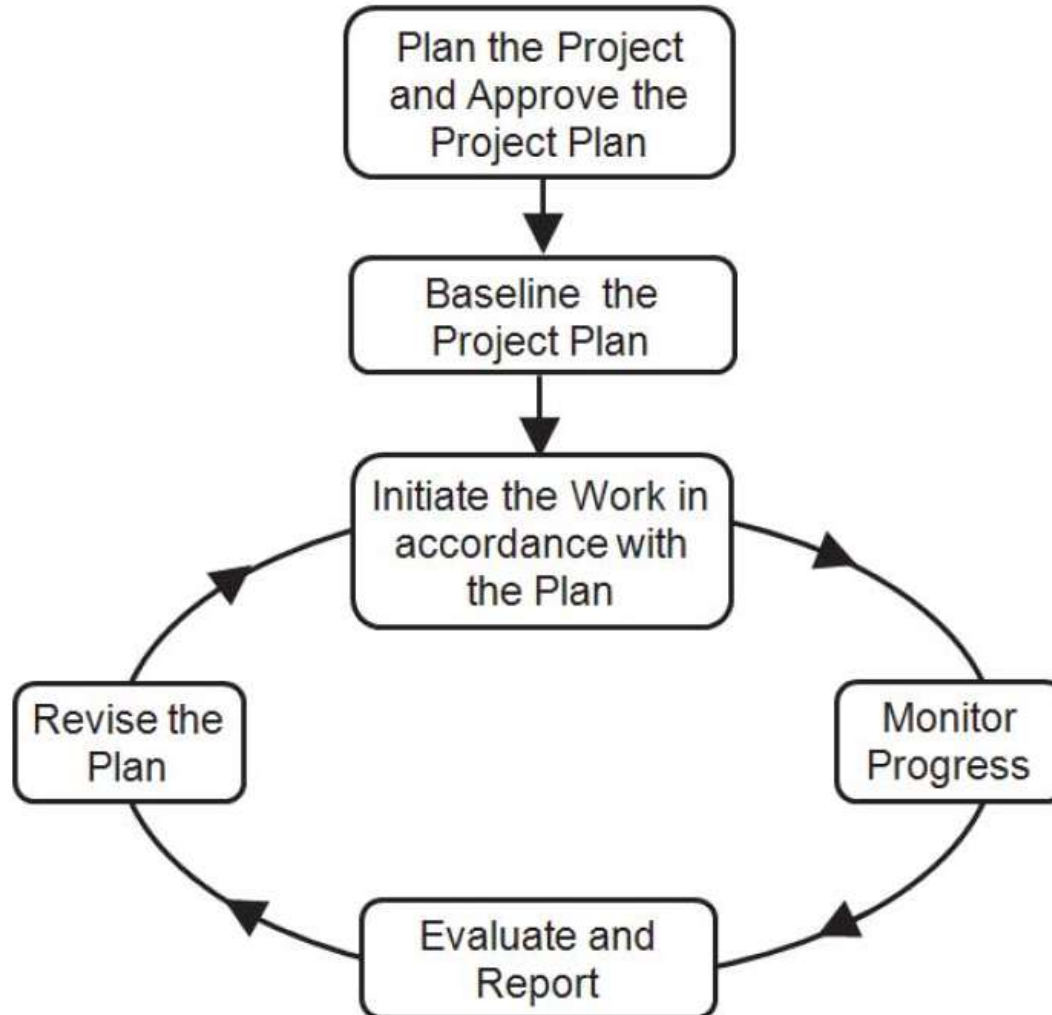


Project Manager – Is it you

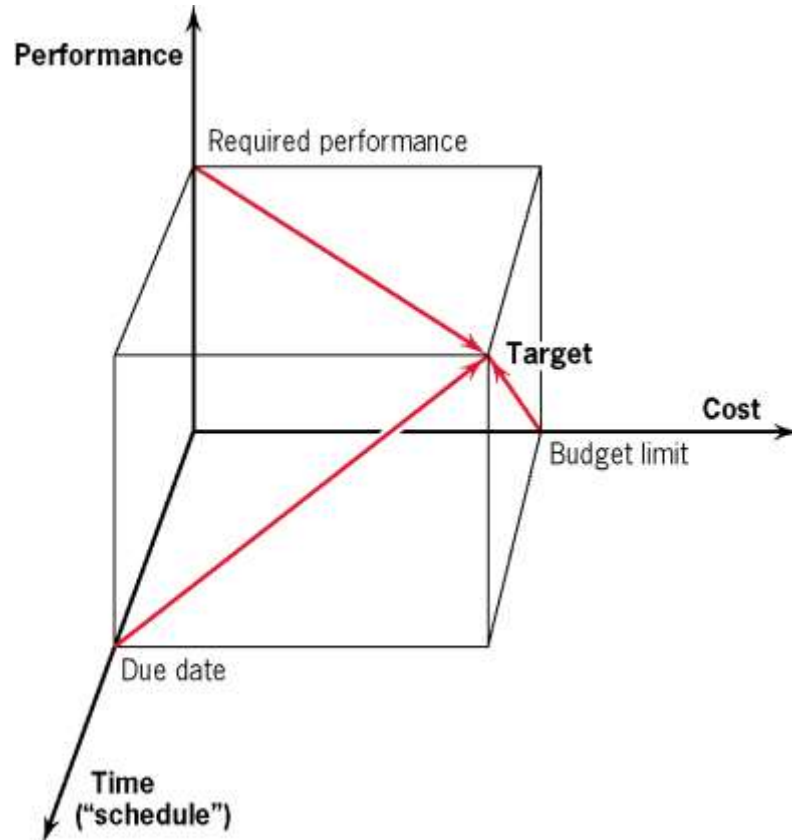
- Communication abilities
- Executive support
- Multidisciplinary background
- Usually an engineer
- On the job from the first phase
 - Analysis and design



Responsibilities of PM



Responsibilities of PM



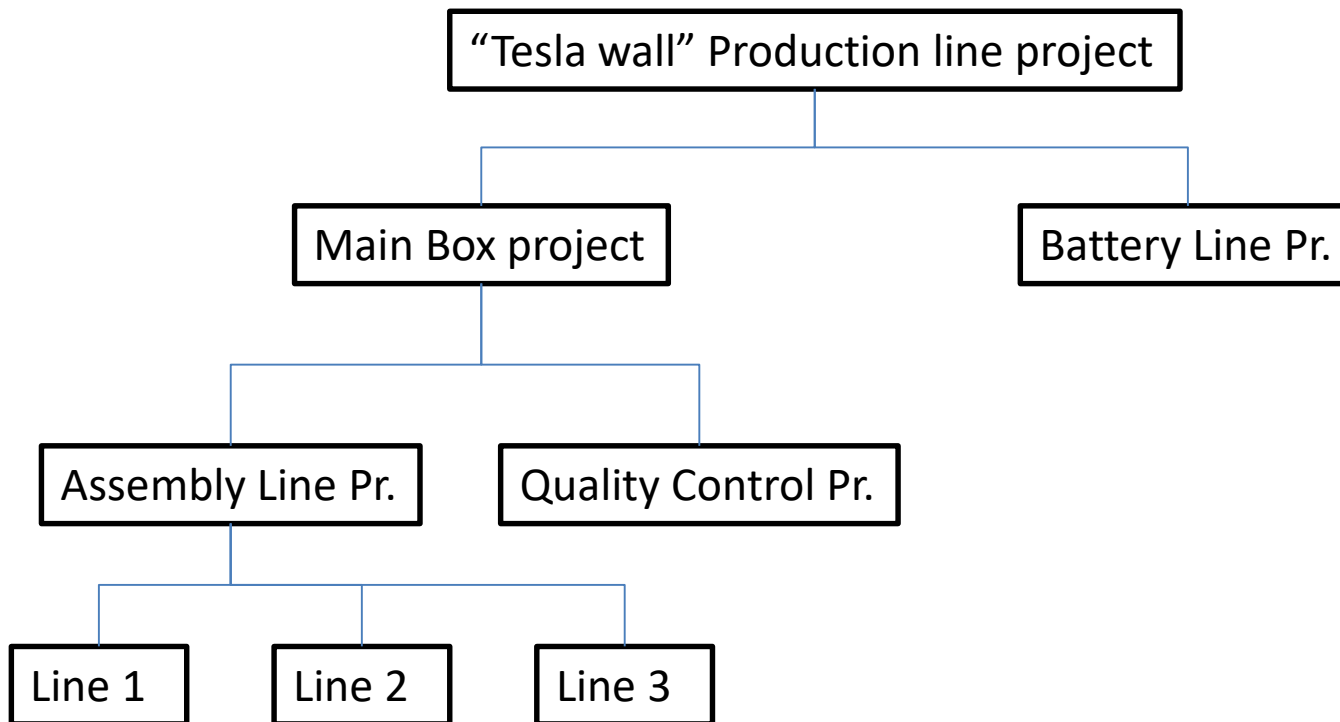
Aim Of Planning

- Identify the scope neatly
- Identify and optimize use of resources
 - Do a time schedule for optimization
- Identify risks and plan to minimize
- Create a baseline plan to measure progress
- Inform managers and stakeholders

Levels Of Planning

Work Breakdown Structure - WBS

- Big projects can be divided to sub projects



Tools we will use

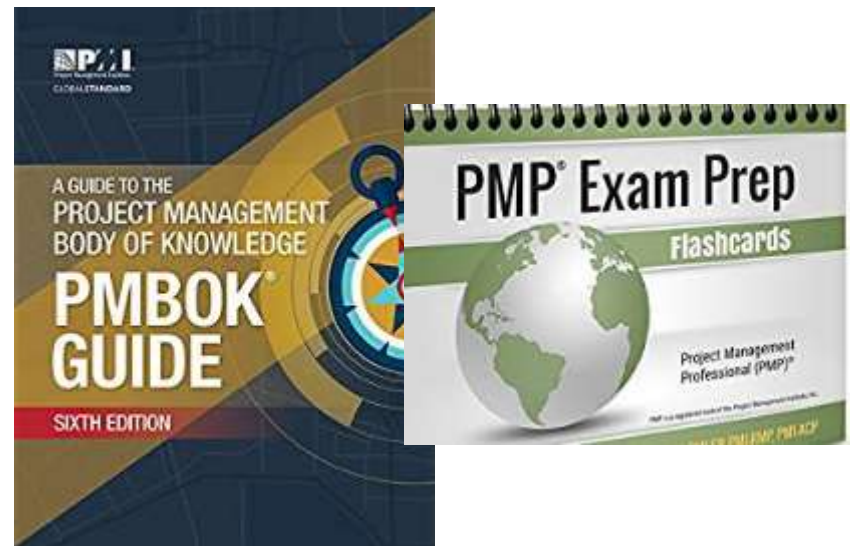
Software tools

- MS Project – For about 40 hours (10+30)
- Spreadsheet (Excel or Open Office) – Few hours

Methods

- Managerial framework
 - Organization
- CPM
- PERT

Course resources



Teams for your projects

Teams preferably can be the same of your project course

- Teams of 3 to 5
- Each group should be able to bring at least one computer to the class
 - 3 or 5 is better (you will have free software for each computer)
- Team should be of the same section.



How to load software tools

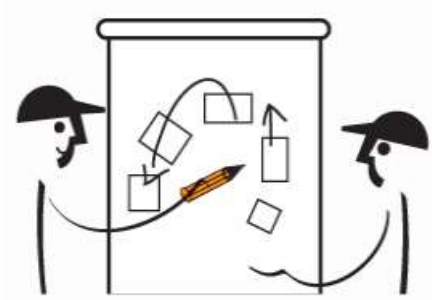
<https://e5.onthehub.com/WebStore/ProductsByMajorVersionList.aspx?ws=44b496ae-799b-e011-969d-0030487d8897&vsro=8>

System admin: Caner HEKİMOĞLU

- Each team should bring at least one computer to workshops
 - (more or all is better)
- Your first assignment will be through last slide.
- You may also use LibreOffice
(Workshops will be in MS-Office [and Optional])

Discussions

- Examples of
 - Yes this can be a project
 - No it can't be a project

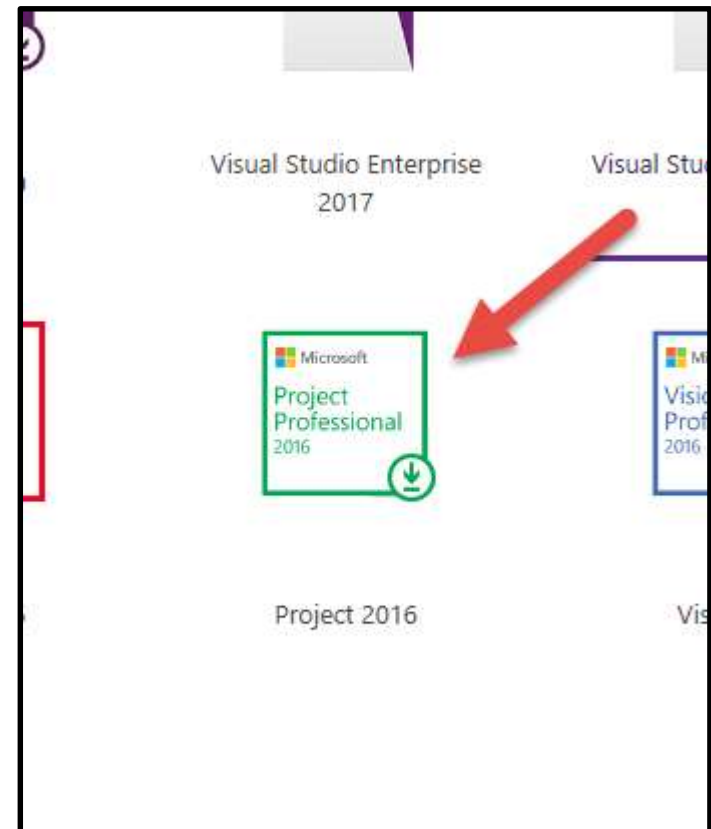


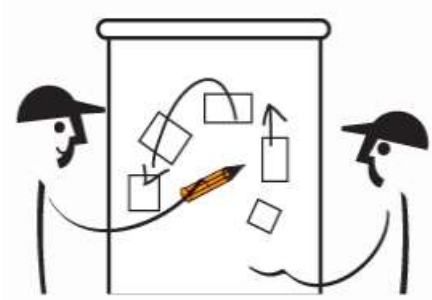
Workshop & Assignment

Load MS Project (Optional)

<https://e5.onthehub.com/WebStore/ProductsByMajorVersionList.aspx?ws=44b496ae-799b-e011-969d-0030487d8897&vsro=8>

- Go to the address at top
- Select the software
- Select English version
- Add to basket
- Login by your e-mail of @yasar.edu and load.
- If you cannot, connect to Admin Caner Hekimoğlu.





Workshop & Assignment

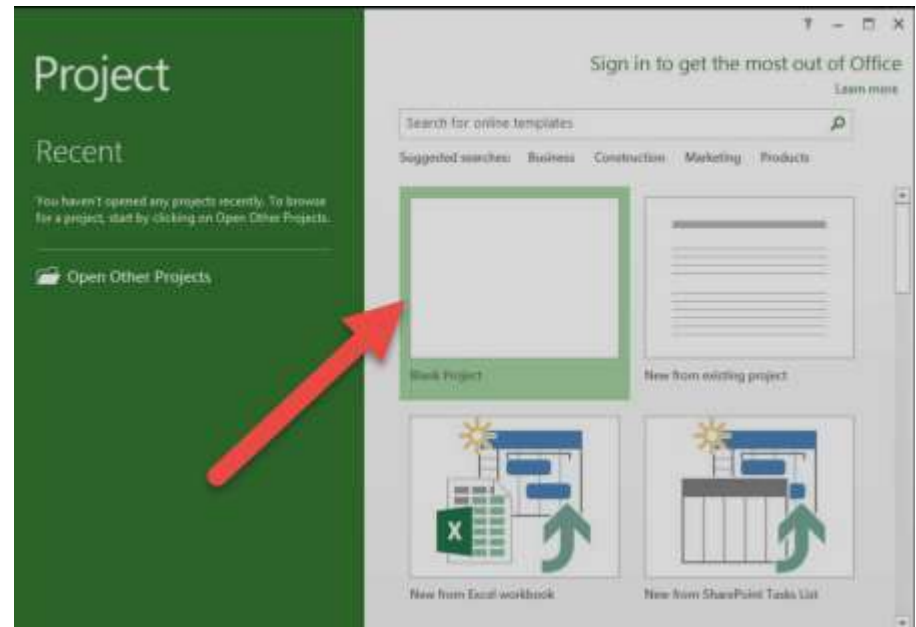
Create a new blank project (Optional – No grade)

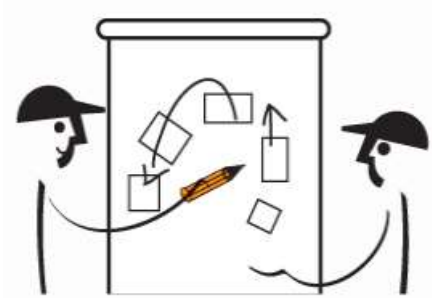
Project professional can work on

- Project server or
- Your personal computer

You may create from

- an existing project
- You may import tasks from
 - Excel sheet or
 - SharePoint task list





Workshop & Assignment

Observe the screen

The screenshot shows the Microsoft Project software interface. The title bar reads "Project1 - Project Standard". The ribbon menu is visible with tabs for FILE, TASK, RESOURCE, REPORT, PROJECT, VIEW, DEVELOPER, and FORMAT. The PROJECT tab is active, showing various task-related icons. The main workspace is divided into a TIMELINE view at the top and a GANTT CHART view below. The TIMELINE view shows a task bar for "Add tasks with dates to the timeline" starting on 02 Mar '14 and ending on 02 Mar '14. The GANTT CHART view shows a table with columns for Task Mode, Task Name, Duration, Start, and Finish. The table contains one task: "Add tasks with dates to the timeline" with a duration of 24 Feb 14 to 02 Mar 14. The interface includes a status bar at the bottom, a zoom slider, and a scroll bar on the right. A right-click menu is visible, with options to "hide Timeline or Show Split".

Quick Access Toolbar

Ribbon Menu

Ribbon Toolbar

Timeline

Timescale

Select All Button

Table

Status Bar

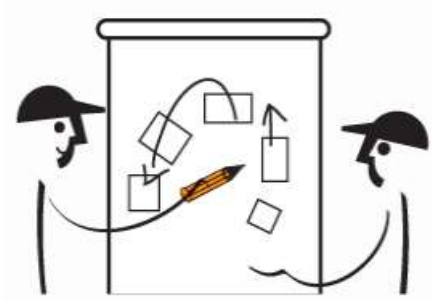
Bar Chart or Gantt Chart area

Zoom Slider

Right click here for menu to hide Timeline or Show Split

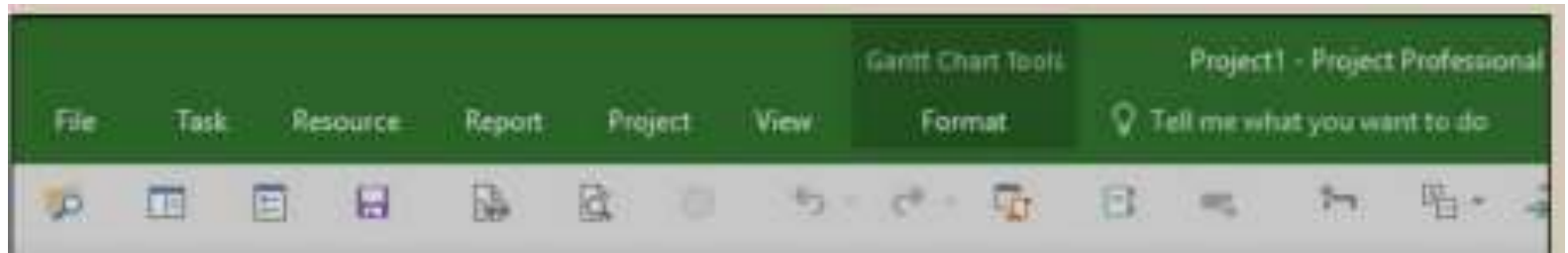
Scroll Bar

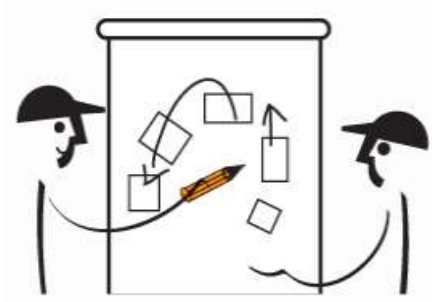
Task Mode	Task Name	Duration	Start	Finish
	Add tasks with dates to the timeline	24 Feb 14 - 02 Mar 14	02 Mar 14	02 Mar 14



Workshop & Assignment

Customize the tool bar as below





Workshop & Assignment

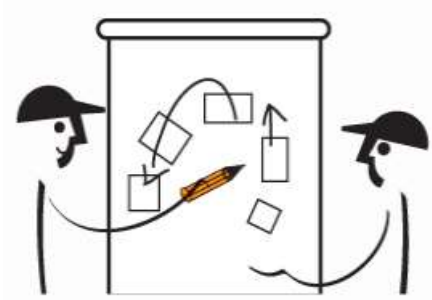
Play some for customization

The screenshot shows the Microsoft Project interface with the 'GANTT CHART TOOLS' ribbon selected. The 'FILE' ribbon is also visible. A 'Customize Quick Access Toolbar' dialog box is open, showing a list of commands with checkboxes. The 'Save' and 'Redo' commands are checked. Two callout boxes provide instructions: 'Quick Access Toolbar has been moved below the Ribbon bar.' and 'Checked Buttons are displayed on the Quick Access'.

Quick Access Toolbar has been moved below the Ribbon bar.

Checked Buttons are displayed on the Quick Access

- New
- Open
- Save
- Save As
- Email
- Quick Print
- Print Preview
- Undo
- Redo
- View
- Touch/Mouse Mode
- More Commands...
- Show Above the Ribbon

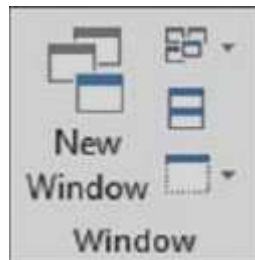


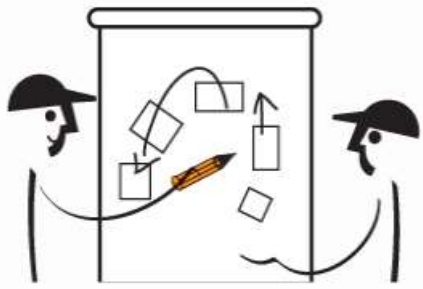
Workshop & Assignment

Create a new Windows

View, Window group, New Window

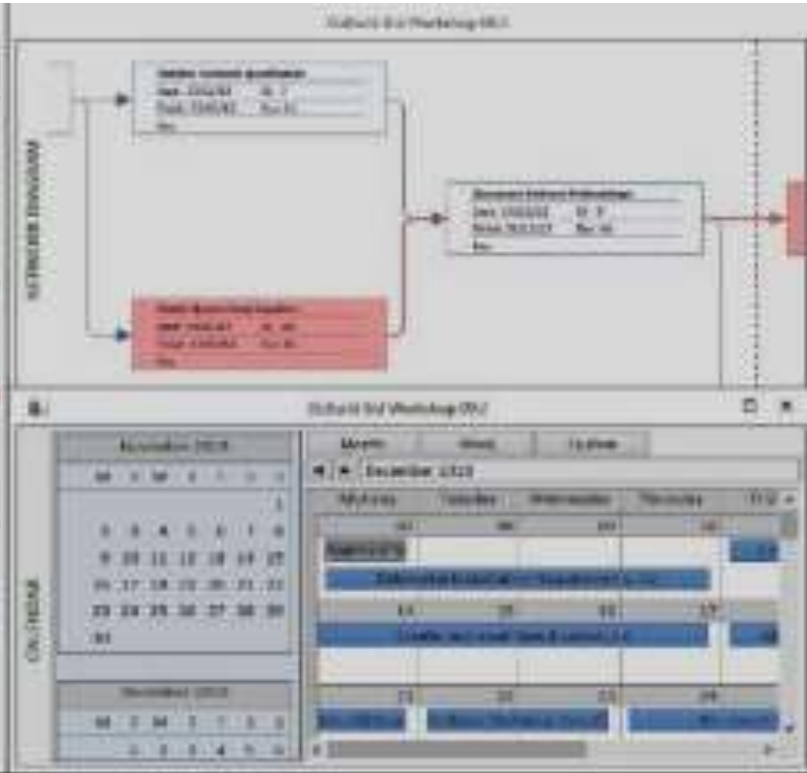
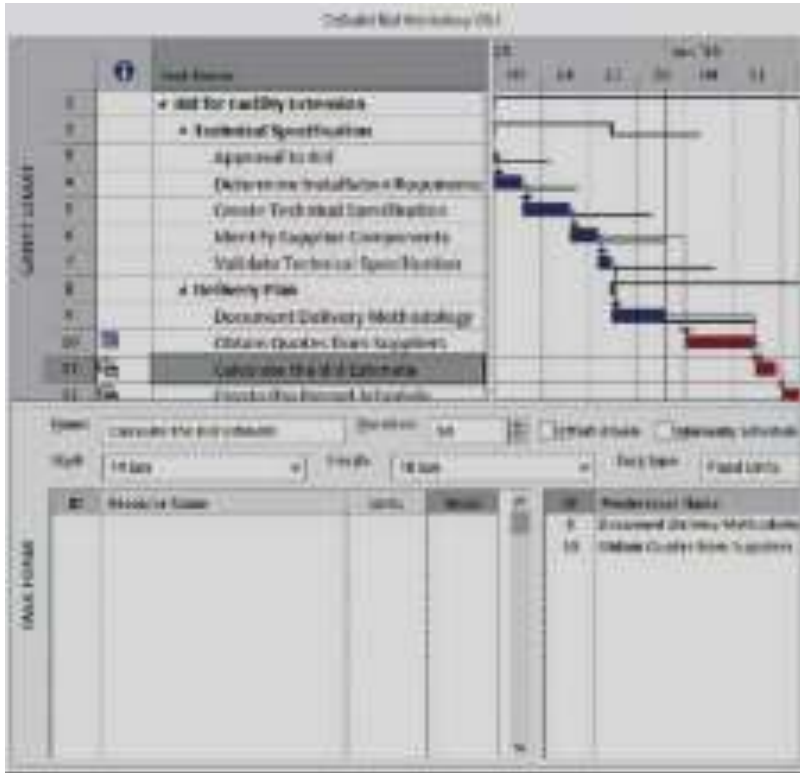
Try to organize you windows

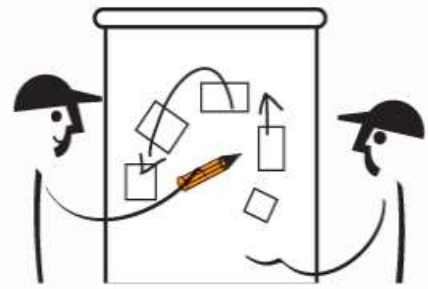




Workshop & Assignment

Get ready for this in the following weeks





Workshop & Assignment

No Grade – Only to show you have started

- After some playing on the screen
 - Send me a screenshot by e- mail
 - Do not worry: you may change your teams till the end of week two.
 - I may wait till we cover project teams in organizations.

hp@quiztechnology.com



Questions & PMBOK

- Questions and **PMBOK**

hp@quiztechnology.com

NEXT WEEK:

- Project Organization – Scope – Terminology – Work Breakdown
- Work Shop And Assignments